

The NR/MR WDB Continues with its Sector Partnership Work in the Region.

For a number of months, the New River/Mount Rogers Workforce Development Board (and the New River/Mount Rogers Workforce Investment Area Consortium Board) have been leading the region towards “sector strategies” through the use of Sector Partnerships.

Many of you attended out three regional workshops, but there are lots of folks out there that are still unclear about this initiative. Below is a brief summary.

The Challenge

- Middle-skill jobs make up the largest portion of the labor market
- Employers can't find enough workers trained to the middle-skill level
- Sector partnerships help solve this problem

A Solution

- *Ensure that our region's businesses and industries have a talent pipeline filled with skilled workers*
- *They then will be competitive in both today's and tomorrow's marketplace,*
- *It will drive our region's economy*
- *And workers can earn a sustainable, self sufficient wage*

Sector Partnerships.....

- Are partnerships of companies
- Are from the same industry sector
- Include education, workforce development, economic development and community organizations
- Partnerships focus on key issues related to the target industry in their natural labor market region
- Are employer-driven
- Are regional
- Are convened by a credible third-party
- Act as a coordinating body across multiple education, workforce development, economic development and other programs
- They create highly customized responses to a target industry's needs, and therefore are highly accurate in meeting needs

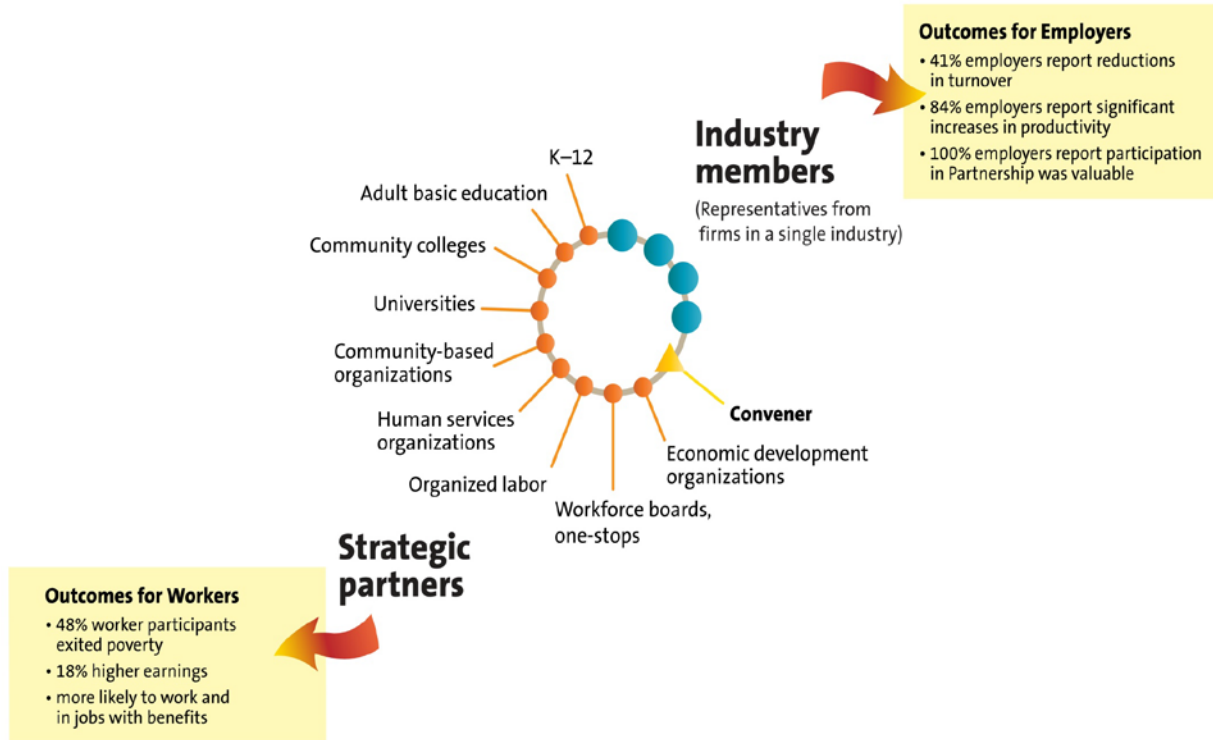
Why do Sector Partnerships Matter?

- Meeting businesses' needs for a skilled workforce and supporting industry growth and competitiveness requires new kinds of cross-sector collaboration
 - In a sector partnership, employers are not just advisors, but full partners, actively invested and engaged in implementing the solutions they have developed collaboratively

- For educators, sector partnerships provide a venue for faster understanding of changing industry needs; a vehicle to identify, build and refine curriculum, programs and credentials; the only way to truly create industry-driven career pathway systems

Sector Partnership

The partnership addresses common needs of employers and generates coordinated solutions that benefit workers.



For more information about Sector Partnerships in the region contact:

Marty Holliday, marty.holliday@nrmrwib.org, 540-633-6764.